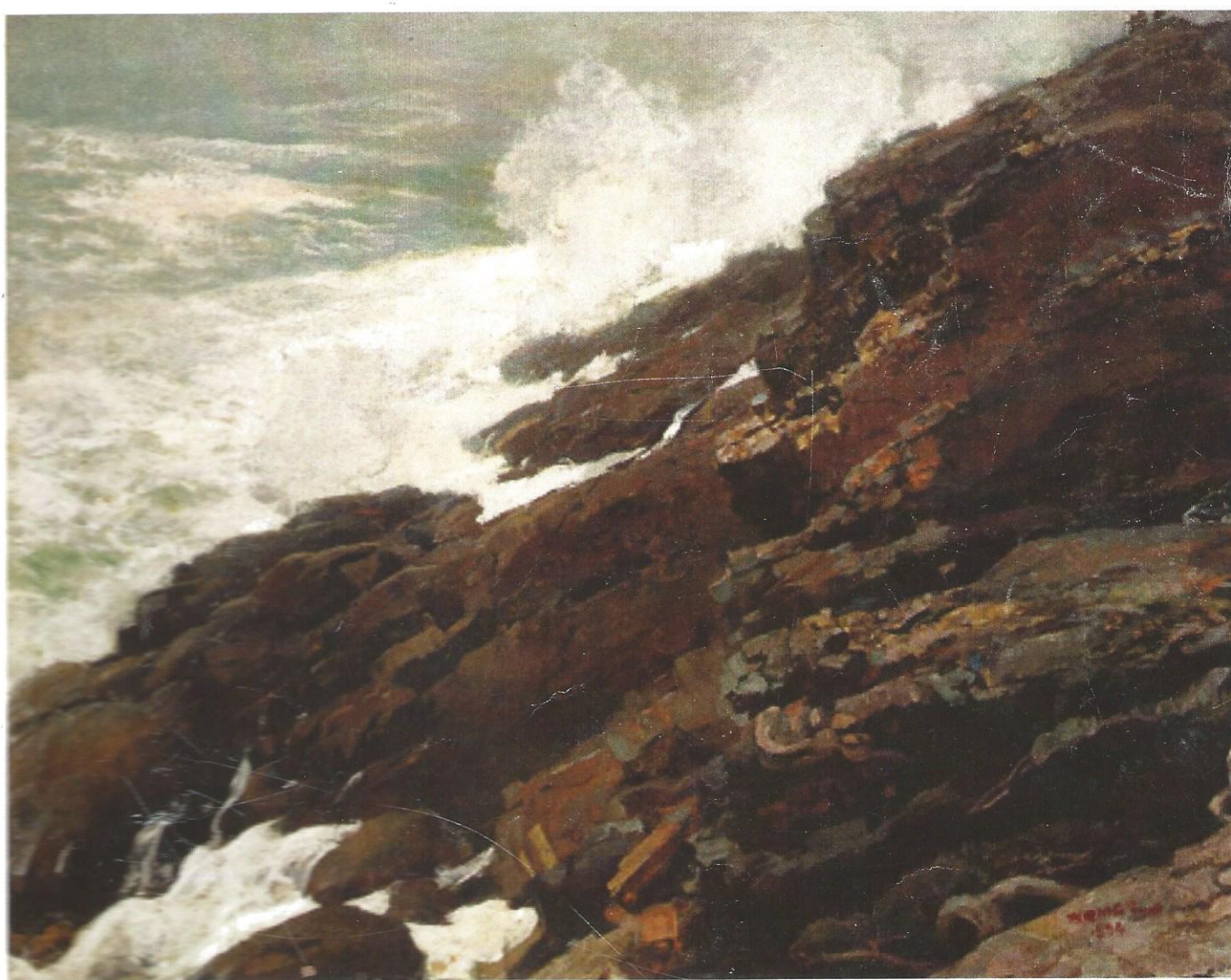
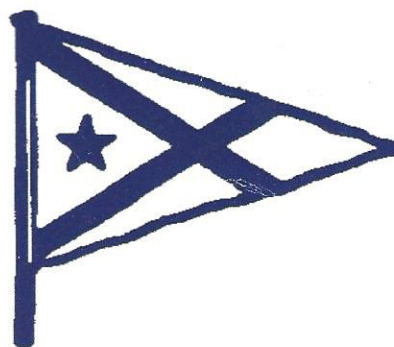


11671509

Manchester Yacht Club

2011 Cruise

Up River and Downeast



see Charts 12300 and 12326; for
12214; for Chesapeake Bay, see Charts 12200 and 12221

the Bay of Fundy and at the approach to Saint John
by the Department of Transport, Canada. For positions
and National Ocean Service chart 13260

chart no.
30, 1990
m 1983.
informa-

SCALE 1:1,200,000

WARNING
The prudent mariner will not rely solely
on any single aid to navigation, particularly
on floating aids. See U.S. Coast Guard Light
List and U.S. Coast Pilot for details.

lished by the
should not be
position shown
y data. Every
nautical mile
Coast Guard
ly solely on the

azardous mater
1,000 gross tons
181

aticus

Manchester Yacht Club Up River and Downeast 2011 Cruise

*There is nothing—absolutely nothing—half so much worth doing as simply
messing about in boats. In or out of 'em, it doesn't matter. Nothing seems
really to matter, that's the charm of it. Whether you get away, or whether
you don't; whether you arrive at your destination or whether you reach
somewhere else, or whether you never get anywhere at all, you're always
busy, and you never do anything in particular; and when you've done it
there's always something else to do, and you can do it if you like, but you'd
much better not.*

-Kenneth Grahame, *The Wind in the Willows*.

Welcome to Up River & Downeast

Cruising has two pleasures. One is to go out in wider waters from a sheltered place. The other is to go into a sheltered place from wider waters.

- Howard Bloomfield

Welcome aboard the 2011 MYC Cruise!

We are blessed to be a day's sail from one of the best cruising grounds in the world, the coast of Maine. It combines the best of lovely islands, sheltered harbors, broad ocean passages, magnificent rivers, mountains, abundant wildlife, and local color.

Manchester Yacht Club cruises have long been our much-anticipated summer vacation providing peace, laughter, friendship, tremendous scenery, great food, new experiences, and great yachting. This year's Up River and Downeast Cruise stretching from Kittery to Mt. Desert gives MYC members a chance to explore the full range of what Maine has to offer with old and new friends.

Welcome!

Tom Johnson, Commodore

Acknowledgments

2011 MYC Cruise Committee

Charlie Newhall (Cruising Committee Chair); Mike Maginn and Roy Mayne (Cruise Co-Chairs); Augusta and Randy Ayer; Chris Dolan; Peter and Betsy Madsen; Arlene Maginn; Martha Mayne; Trish Newhall; Abbott Reeve; Chet Shuman; Tom Walker

Event Hosts

Randy and Augusta Ayer & the Metcalf Family; Chris and Marlene Dolan; Roy and Martha Mayne; Abbott and Kay Reeve; Chet and Evelyn Shuman; Tom and Ann Walker

Additional Thanks

Jim Bildner, author of *A Visual Cruising Guide to the Maine Coast*, and Abby Crocker for help with the aerial photographs. Cover: painting by Winslow Homer, *High Cliff Coast of Maine*.

The sail, the play of its pulse so like our own lives: so thin and yet so full of life, so noiseless when it labors hardest, so noisy and impatient when least effective.

-Henry David Thoreau

Rendezvous At-A-Glance

Why is the rum always gone?

- "Captain Jack Sparrow"



Saturday, August 6th

Kittery Point, Pepperell Cove Rendezvous, 1730-1930

Officers-of-the-Day: Roy and Martha Mayne



Monday, August 8th

New Meadows River, The Basin Rendezvous, 1730

Officers-of-the-Day: Tom and Anne Walker



Wednesday, August 10th

Depart for Maine Maritime Museum, 1030

GWC at the Robinhood Marine Center, 1600

Officers-of-the-Day: Chet and Evelyn Shuman



Friday, August 12th

Port Clyde Rendezvous, 1700

Officers-of-the-Day: Chris and Marlene Dolan



Tuesday, August 16th

Merchant Island Rendezvous, 1200

Officers-of-the-Day: Randy and Augusta Ayer



Thursday, August 18th

Southwest Harbor Rendezvous 1730

Officers-of-the-Day: Abbott and Katharine Reeve

BYO

Don't forget to bring your own food and drink - BYO

GWC - Vining H&O (none)

GWC - Vining H&O + Conkle + Bigelow

The Fleet

It isn't that life ashore is distasteful to me. But life at sea is better.

-Sir Francis Drake

Yacht	LOA	Crew	Cell Phone
<i>Agadou</i>	34.6'	Roy and Martha Mayne; Beau Geste	617.834.4230
<i>Chime II</i>	35'	Fred Morris; John Ledbetter; Liz Morris; Debbie Ledbetter	617.733.4235
<i>Clarita</i>	40'	Sam and Deamie Cabot	508.662.7899
<i>Enchanted</i>	36'	Maudy and Ranny Barton	978.578.4968
<i>Island Girl</i>	30'	Mike and Arlene Maginn	508.932.2324
<i>Mantra</i>	51'	Andy and Ann Deveraux	508.801.4076
<i>Marisol</i>	43'	Paul and Elaine Kenerson	978.618.0925
<i>Meander</i>	30'	Bud and Barb Elliott	978.578.6719
<i>Narada</i>	36.8'	Mory and Sarah Creighton; Andy (15) and Sam (15) Creighton	978.270.8732
<i>Narcissus</i>	48.5"	Abbott L. and Katharine Reeve; Frank and Louisa Deland; Austin and Felicity Hoyt; Robert Padulo; Angel Raffanello	978.807.5127
<i>Old Squaw</i>	32'	Jock and Anne Winchester	978.578.0120
<i>Orion</i>	38'	Chet and Evelyn Shuman; Peter and Debbie Twining	617.840.1071
<i>Parvati</i>	40'	Peter and Betsy Madsen	
<i>Petrel</i>	41.5	Gar Morse; Margo Morse; Guillaume Blin	617.851.4079
<i>Sarsaparilla</i>	36'	Randy and Augusta Ayer	804.614.7764
<i>Samoset</i>	26.7'	John and Kate Newhall; Becca Newhall; Charlie and Trish Newhall; John (14) and Sarah (9) Newhall	978.407.9194 617.803.2379
<i>Sooner</i>	35'	Neil and Martha Chayet	
<i>Shearwater</i>	42'	Jim Starkey and Ann Harrison	978.578.7847
<i>Spray</i>	35'	William Kiley; Peter Gamage	
<i>Tazzarin</i>	36'	Bill and Annie Barton	781.820.3267
<i>Theodora</i>	32.5	David and Janet O'Hara	671.306.7342
<i>Walkabout</i>	33'	Tom and Anne Walker	978.998.9125
<i>Windslipper</i>	42'	Tom and Mary Fran Townsend; Carl and Ingrid Swanson	617.901.8698
<i>Visingso</i>	41.1	Tom and Eva Johnson; Charlotte and Otto Eberstein	978.590.8858
<i>Viva</i>	43'	Toby Seamans; Harry Otis; Pete and Joan Johnson; Randy and Lila Renchard	

There is, one knows not what sweet mystery about this sea, whose gently awful stirrings seems to speak of some hidden soul beneath.

Herman Melville, *Moby Dick*

Cruise Protocols

Ships are the nearest things to dreams that hands have ever made.

-Robert N. Rose

Communication

When on the coast of Maine, we share the VHF airwaves with fisherman and merchant seamen who are trying to make a living on the ocean. Occasionally, they find our badinage intrusive. As a statement of their displeasure, they occasionally lock a mike, play loud music, discuss their views about yachtsmen in basic terms and otherwise make it known that they don't like us hogging their portion of the public airwaves.

As a result, we will have the following communications plan. Our basic channel will be 78A as a starting point. We will shift to the following channels as designated by the Officer of the Day at the morning call if we have been experiencing interruptions. We can also hop off a busy channel, designating the letter of the destination channel to the receiving party.

Channel A--78A (MYC CLUB FREE)

Channel B--68

Channel C--69

Channel D--84 ~~80A~~ (LAST RESORT
A COMMERCIAL
CHANNEL)
CHANNEL 72

Cruising Announcements

Daily announcements will be made on Channel 78A at 0830 hrs and at 1700 hrs.

Officers of the Day

August 6 th	Mayne	August 13 th	Johnson
August 7 th	Newhall	August 14 th	Madsen
August 8 th	Walker	August 15 th	Creighton
August 9 th	Maginn	August 16 th	Ayer
August 10 th	Shuman	August 17 th	Starkey/Harrison
August 11 th	Barton	August 18 th	Reeve
August 12 th	Dolan		

Cruise Protocols

It is good to have an end to journey toward, but it is the journey that matters in the end.

-Ursula K. Leguin

Dress Code

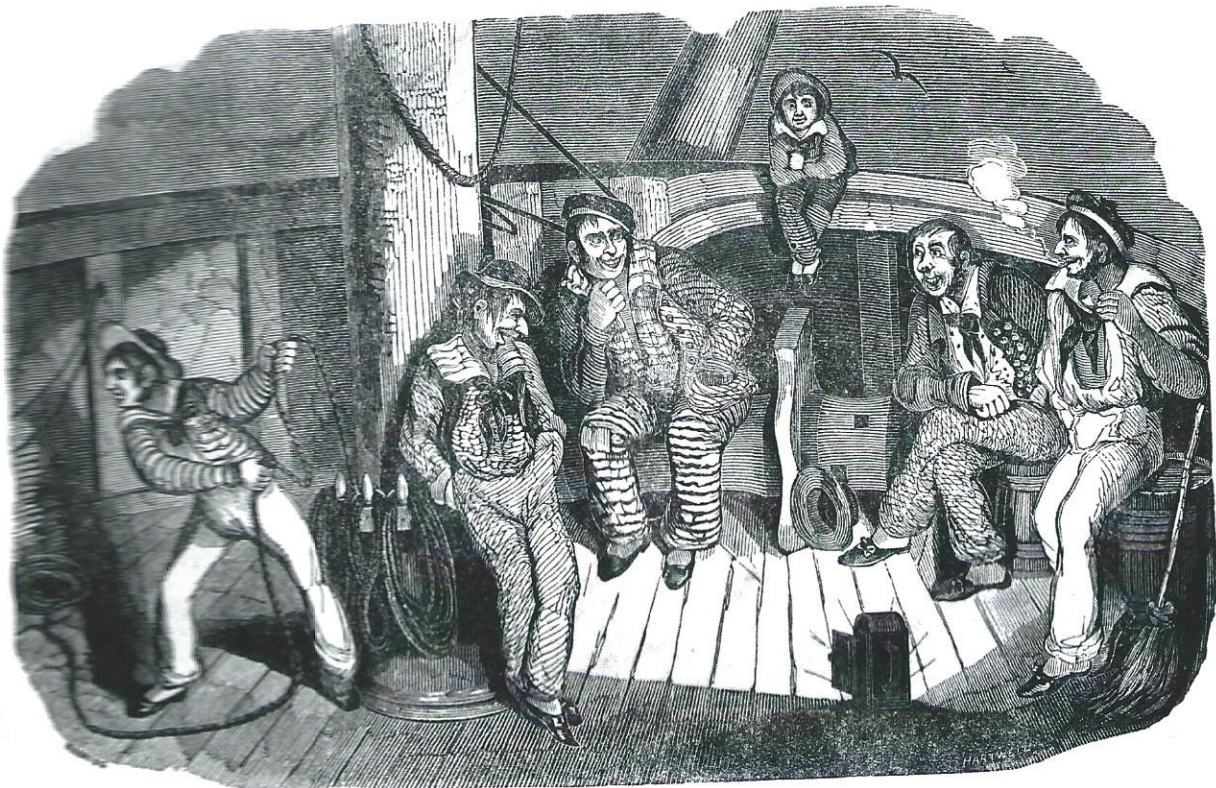
Dress code requires the wearing of name badges at all Cruise events.

Flag Etiquette

All yachts on the Cruise will fly the Manchester Yacht Club burgee at masthead (sloops), from the top of the mainmast (yawls and ketches) or on a bow staff (if mastless). Yachts will fly the yacht ensign from 8 AM until sunset.

Moorings

Each skipper is responsible for arranging moorings at each harbor. Mooring information for scheduled rendezvous is listed on the event page. For destinations en route, please consult your cruising guide.



The Gam

Helpful Information

The time for taking all measures for a ship's safety is while still able to do so. Nothing is more dangerous than for a seaman to be grudging in taking precautions lest they turn out to have been unnecessary. Safety at sea for a thousand years has depended on exactly the opposite philosophy.

-Chester Nimitz

Emergency Radio Channels

- The US Coast Guard monitors VHF 16

Emergency Facilities

- York Hospital, York, ME. 207-363-4321
- Penobscot Bay Medical Center, Rockport, ME. 207-596-8000
- Mid Coast Hospital, Brunswick, ME. 207.729.0181
- Mt. Desert Island Hospital, Bar Harbor, ME. 207.288.5081
- Blue Hill Memorial Hospital, Blue Hill, ME. 207.374.3400
- Miles Memorial Hospital, Damariscotta, ME. 207.563.1234

Sunrise and Sunset

Date	Location	Sunrise	Sunset	Moon
August 6	Kittery Point	0539	1958	Quarter Moon
August 7	Kittery Point	0540	1957	
August 8	Cundy Harbor	0536	1954	Full Moon
August 9	Cundy Harbor	0537	1953	
August 10	Robinhood	0537	1951	
August 11	Robinhood	0538	1949	
August 12	Port Clyde	0537	1946	
August 13	Port Clyde	0539	1945	
August 14	Port Clyde	0540	1943	
August 15	Belfast	0538	1943	
August 16	Isle Au Haut	0539	1938	
August 17	Southwest Harbor	0539	1936	
August 18	Southwest Harbor	0540	1934	

Helpful Information

At sea, I learned how little a person needs, not how much.

- Robin Lee Graham

The August Moon

Moon Phases: August 2011						
Monday	Tuesday	Wednesday	Thursday	Friday	Saturday	Sunday
1	2	3	4	5	6	7
8	9	10	11	12	13 Full	14
15	16	17	18	19	20	21
22	23	24	25	26	27	28
29 New	30	31				

The August Sky

The Perseids. Each year during the summer months, the earth crosses the track of Comet Swift-Tuttle. The path is full of dusty debris that has been scattered along the comet's orbit. These fine particles are orbiting the sun and they hit our atmosphere. The meteor events occur when the particles enter the atmosphere and they vaporize. We see quick flashes of light — meteors, shooting stars. The best observation this year (because of the full moon) is between 3:30 and 4:30 AM in the northeastern sky on August 11th and 12th.

The Milky Way. As August evenings progress, the great mass of stars rises higher in the sky, stretching from east to north. Look for it when the mood is dim.

Antares. In early August the moon passes in front of the stars of Scorpius during the early evening hours. Look for its ruddy color on the evening of August 7th. The star's name is sometimes translated as the "Rival of Mars." Ares is the Greek version of the god of war (Mars). Antares is known as a red supergiant; its distance is measured at about 600 light years. In the final stages of its life cycle, it shines at the brightness of 65,000 suns. It is enormous with a volume that, if empty, would hold over 500 million stars the size of our sun.

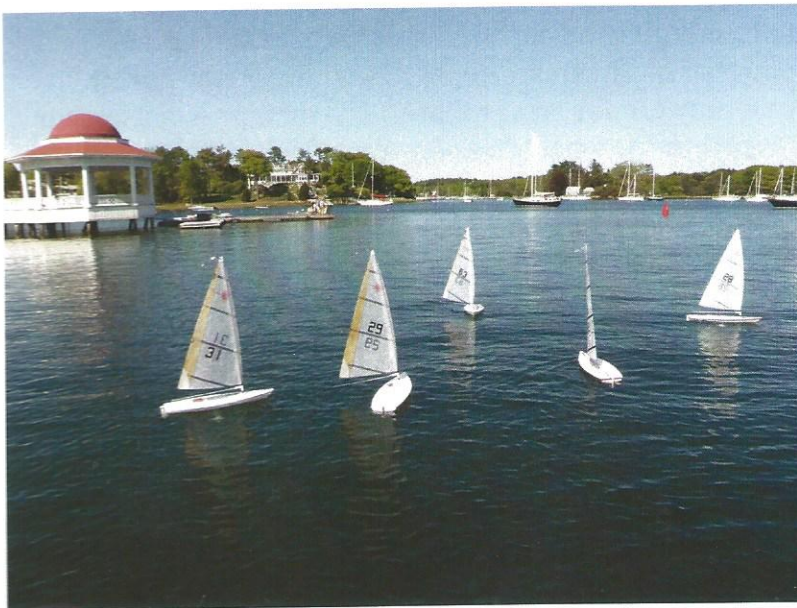
Racing

*One ship sails east and another sails west
With the self-same winds that blow.
'Tis the set of the sail and not the gale
Which determines the way they go.
As the winds of the sea are the ways of fate
As we voyage along through life,
'Tis the act of the soul that determines the goal,
And not the calm or the strife.*

-Ella Wheeler Wilcox

MYC Yacht Races

We'll arrange at least one race with Walkabout as our Committee Boat. A race from Merchant's is in the planning stages. Make sure to tune in to daily communications for race details!



Remote Control Lasers

We'll have informal RC races, weather and current permitting. Plan for possible races in the Basin, at Robinhood, at Merchant's Island, and at Southwest. Listen to the announcements from the Officer-of-the-Day for details!

The Birth of a Yacht Club



This poem, penned by Murray Blair, and memorized by many of his fellow yacht club members, was published in the 1970 Club Journal in a letter to the editor from the poet's nephew, Arthur Blair. The poem is prefaced by a reference to the yacht club's mission, of which the first item is: *a) to foster the social side of sailing.*

The Purple Night, 21st May, 1910

(Submitted by Tom Walker with permission from the Clyde Cruising Club, Scotland, UK)

The time, a peaceful summer's eve,
The scene, a peaceful seaside vale.
Th'occasion was, as I believe,
A Cruising Club's inaugural sail.

I wandered idly round the shore,
And gazed upon the sunlit bay,
Where lay some thirty yachts or more,
All peaceful in the parting day.

Some one or two I knew by sight,
The *Pansy*, *Niji*, and *Lahoo*,
And, if my vision serves me right,
The *Oread* and *Magic*, too.

I wandered onwards towards the quay,
When up the road I chanced to look.
'What mariners are these, I see,
A'getting of their photos took?'

Their snowy sweaters, dazzling bright,
Reflected back the evening sun,
Their crested caps of blue and white
Were quite outside the common run.

No doubt, some millionaires, I thought,
By some strange chance are gathered here.
For none from off a common yacht
In such apparel could appear.

I watched them file into a tend
That stood hard by the hostelry,
And, curious now, my steps I bent
And followed after, cautiously.

Within, the sight on which I gazed
Quite dazzled me. A banquet spread.
I turned to flee. I felt amazed.
But softly entered in, instead.

The dinner was a feast for kings:
The wine was nectar for the gods,
Which, most unfortunately, brings
Oblivion to mortal clods.

At first, no doubt, I felt amused,
As song succeeded song and speech,
But, later on, grew so confused,
I scarce could tell you which was which.

What subsequently then transpired?
Nay, ask me not: I cannot tell.
I ate and drank as I desired.
I know that I was far from well.

When I awoke upon the shore,
The water lapping at my shoes,
And moralized, as oft' before,
Upon the awful curse of booze.

Some thoughts came drifting through my head
Brought, *mayhap*, by the flowing tide,
'Twas something that the Chairman said
'Bout fostering the Social Side.



Entry to Pepperell Cove

Entering Pepperell Cove is easy. After passing Fort Point, head for Nun 4 off Fishing Island. You will see 100 or more boats filling the cove. The channel leading to the town dock is marked by green and red spar buoys.

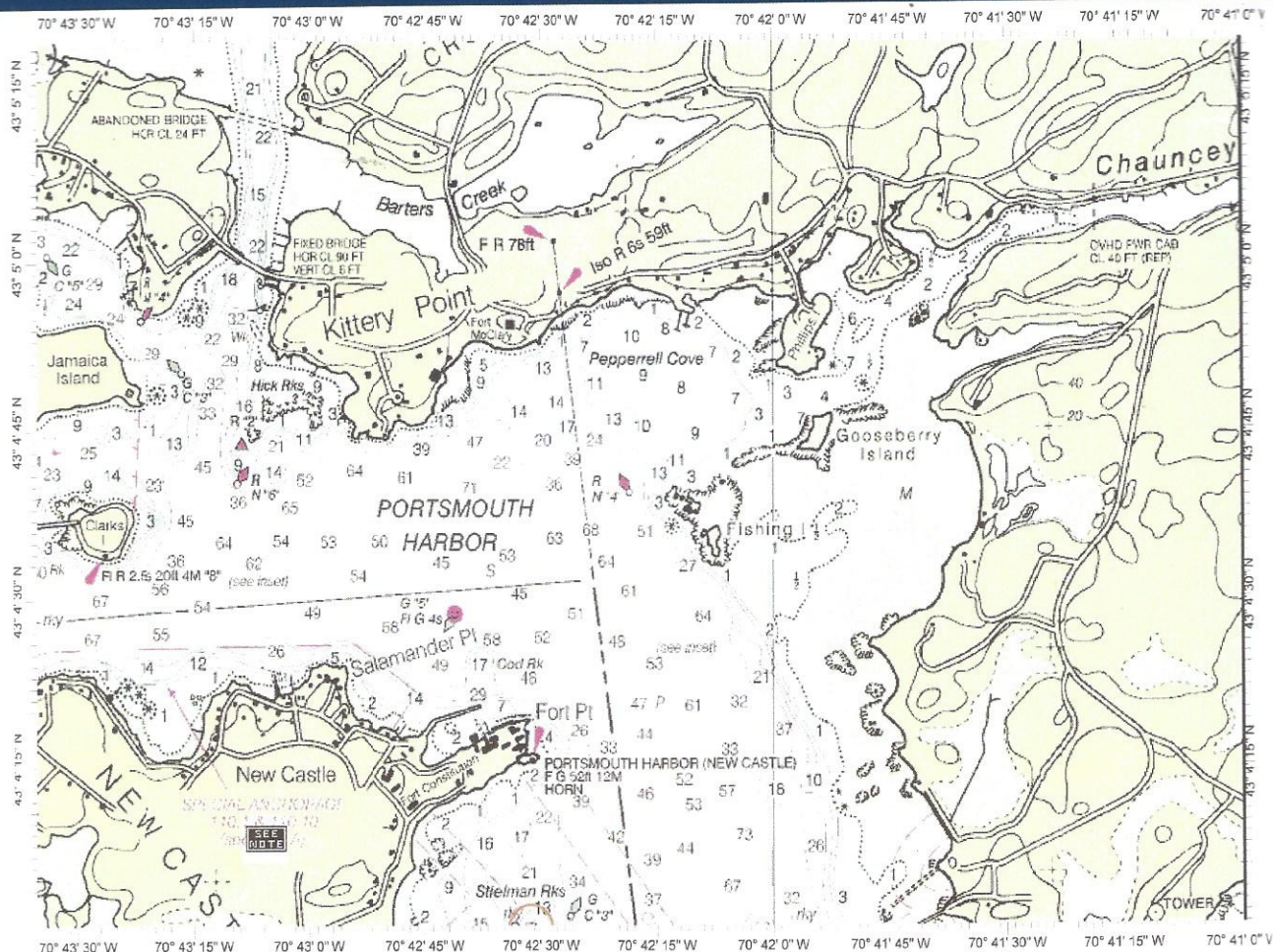
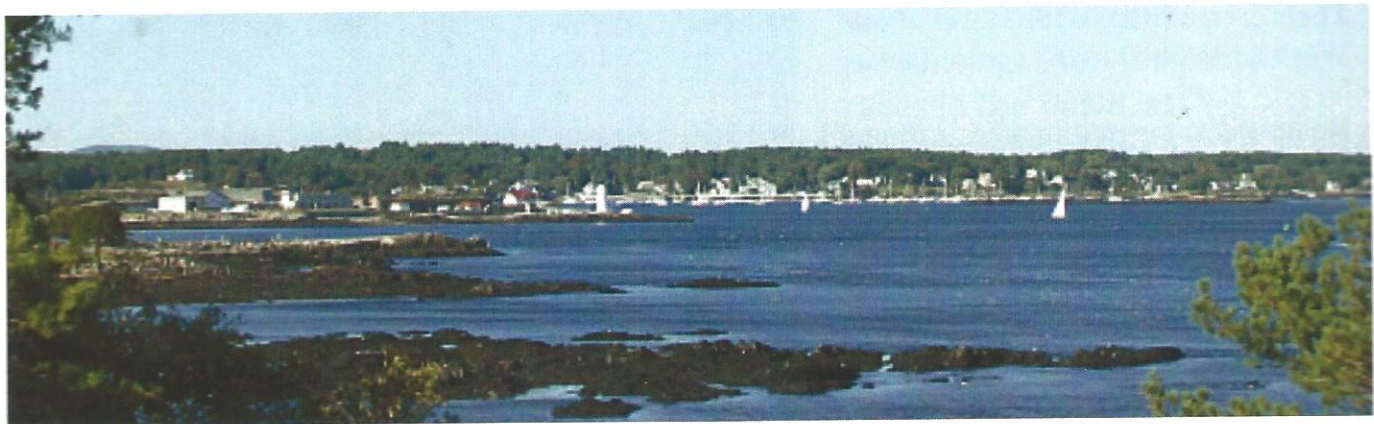


Chart Name: PORTSMOUTH HBR CAPE NEDDICK HBR TO ISLES OF SHOALS
 Chart ID: 13283.1
 Top Left: 43° 5' 19" N 70° 43' 35" W
 Bottom Right: 43° 4' 0" N 70° 40' 59" W

© MAPTECH, INC.



August 6, 2011

Kittery Point/Pepperell Cove

Officers of the Day: Roy and Martha Mayne

The Rendezvous

1730-1930

We'll have hot and cold hors d'oeuvres, and a cash bar located in the Patio below Captain and Patty's Restaurant (formerly Captain Simeon's Galley). The restaurant is located above the town dock in Pepperell Cove. If the weather is poor, we'll meet on the restaurant's second floor.

Tides

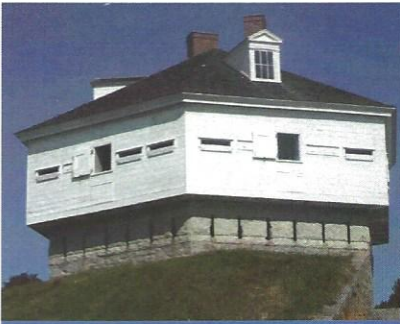
	High	Height	Low	Height
August 6 th	4:38 AM	9.1'	10:51 AM	0'
	5:04 PM	10'	11:37 PM	-0.1'
August 7 th	5:42 AM	8.7'	11:52 AM	0.4'
	6:07 PM	9.9'	12:45 AM (8 th)	0.1'

Moorings/Anchorage

Moorings are available through Kittery Point Harbormaster, Bion Pike (call 207-451-0829, or VHF 9 or 68). A small number of moorings may be available from the Portsmouth Yacht Club (Call 603-436-9877, or VHF 9 or 78). PYC moorings are marked by green and white balls on the western side of the mooring area.

There are three sorts of people; those who are alive, those who are dead, and those who are at sea.

-Old Capstan Chantey attributed to Anacharsis, 6th Century BC



Onshore Exploration Kittery Point Area

Fort McClary was manned during six wars: The American Revolution, War of 1812, Civil War, Spanish-American War, World War I and World War II.

The site of the fort has been occupied since 1689 as an important military defensive position. The area at one time was called "Battery Pasture" and was acquired by William Pepperrell, a merchant and landowner. The first structures were probably no more than simple earthworks and a small block house known as Pepperrell's Garrison or Fort Pepperrell.

The Colony of Massachusetts Bay voted in 1715 to erect a permanent breastwork of six guns for defense of the river although the fort may not have been built until around 1720. The position of a naval officer was also established for collecting a duty from ships coming into the harbor. This fort was named Fort William

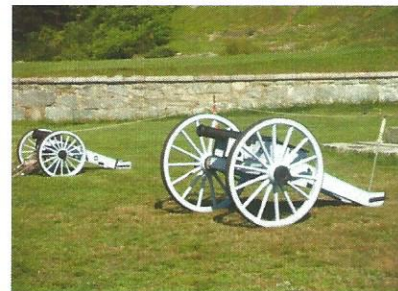
In 1775 local citizens confiscated the property and the fort from the Pepperrell family as they were still loyal to the British Crown. The fort was manned by the New Hampshire militia until 1779, then abandoned.

In 1808 the "Second System" was built and was named Fort McClary after Major Andrew McClary, a New Hampshire native. The Major was the highest ranking officer killed at the Battle of Bunker Hill in 1775. The blockhouse that stands today was built in 1844 and was the last to be built in Maine.

The Civil War period saw a fifty-man company called the Kittery Artillery commanded by Dr. Mark Wentworth, Captain. The Kittery Company was very soon replaced by Battery B 1st New Hampshire Heavy Artillery in 1863. If the fort had been completed it would have resembled Fort Knox, all work was ended in 1868. Fort Knox is located in Bucksport Maine.

At one time there were barracks, Officers Quarters, and a cookhouse with mess hall, a powder magazine and two rifleman's houses. A shot furnace stood on the Lower Battery at one time as well. A guard shack and hospital stood just north of the fort.

From 1942-45, the Blockhouse was again used as a lookout post by local Civil Defense nits for spotting overhead aircraft and ships in the harbor.



A revolutionary war era canon is one of the many sights visitors see at the encampment on August 13-14th.

August 7, 2011
At Will

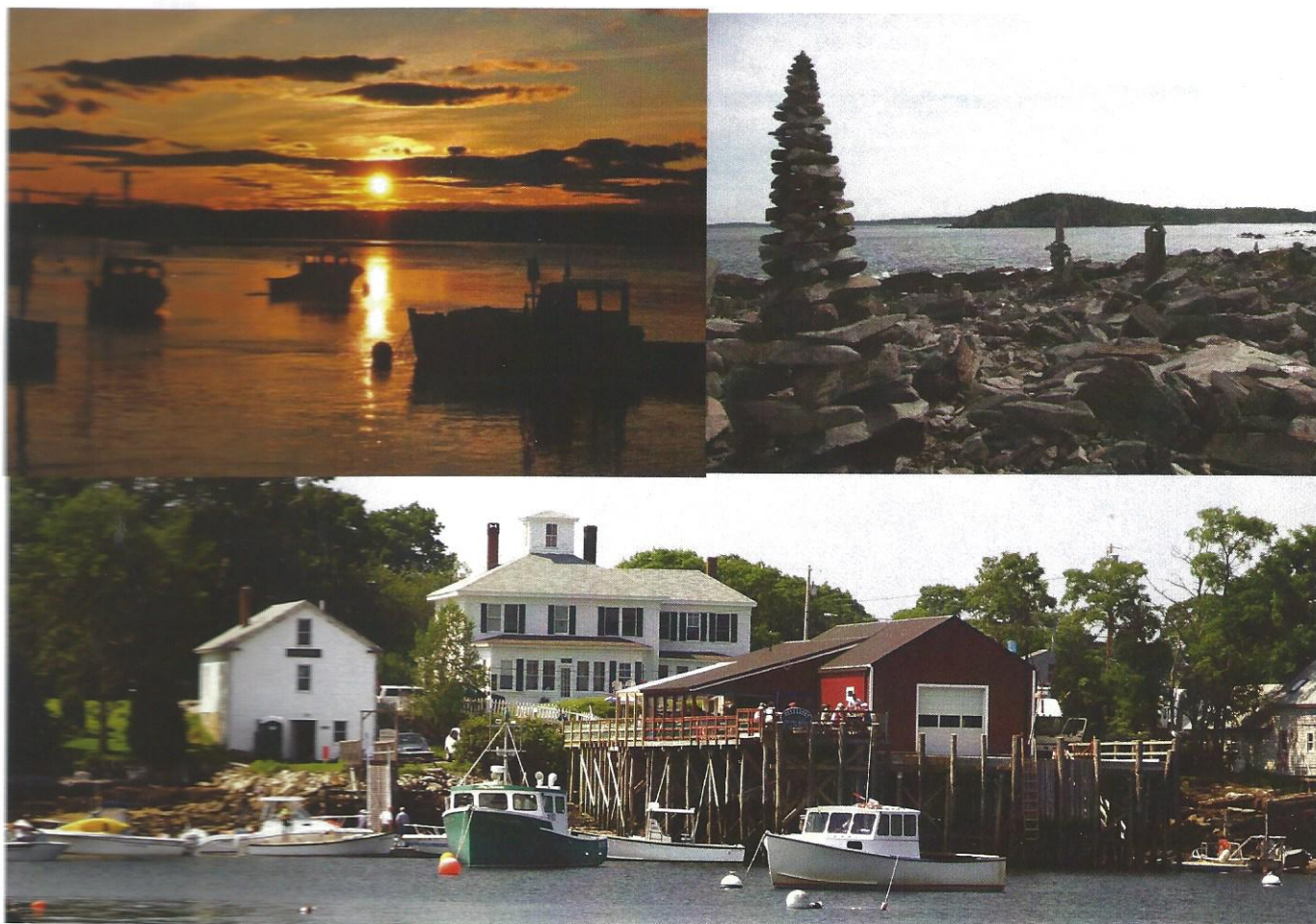
Officers of the Day: Charlie and Trish Newhall

At last, the god-damned engine is quiet!

-William Snaith

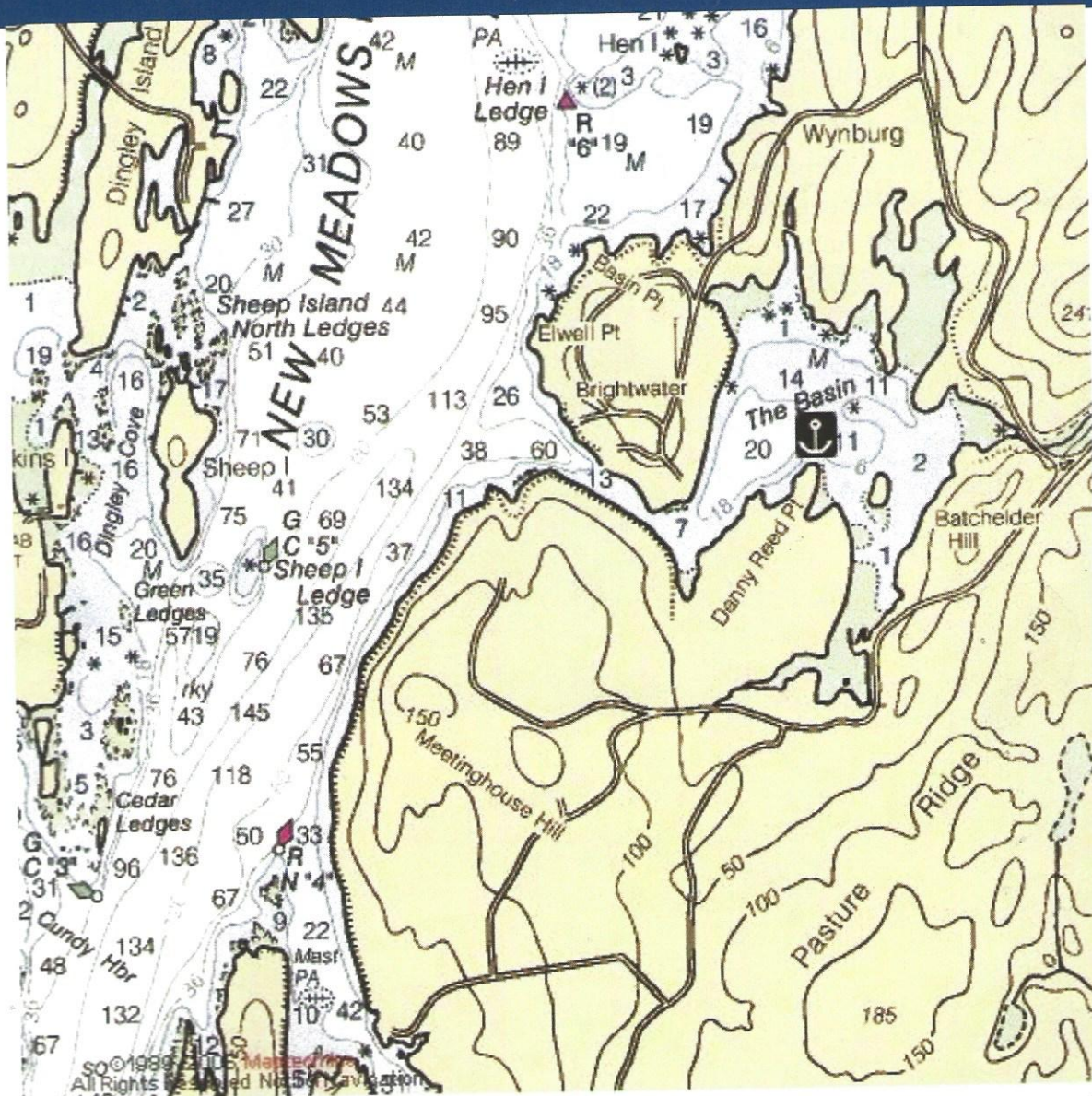
Suggested Harbors

Many suggested harbors are described in further detail by MYC members in a document on the website. Go to the cruising page, and click on "Secrets of the Down East Coast." Some suggested spots for this at-will day include: Biddeford Pool; Eagle Island; Peak's Island; Snow Island; Diamond Island; Portland Yacht Club; Sebasco Harbor; Diamond Island; Potts Harbor.



Entry to The Basin

The "Basin" is a unique totally landlocked bay located off the east side of the New Meadows River in the North East corner of Casco Bay. Heading up river, pass Cundy Harbor and Can "5" on Sheep Island Ledge. Follow along the bold east shore of the river and you will come to a narrow channel between high banks which leads into the Basin. There is at least 7 feet of water at low tide. Stay more or less in the center until the channel turns north. Favor the south and east side of the channel as you turn the corner. HINT: When following a narrow channel in Maine it is usually safe to follow the lobster pot buoys as they are set in the deepest water. However, if you see a circle of buoys, never cross it—there is likely a ledge in the center!



Not for navigation. Use NOAA Charts #13290, 13288, 13293.

August 8, 2011

The Basin, New Meadows River

Officers of the Day: Anne and Tom Walker

Rendezvous

1730

In the Basin, we'll share grog (green watering cans) and good conversation aboard rafted yachts. Bring hors d'oeuvres to share and soft drinks if a beverage other than rum or bourbon is desired. Ice and cups will be provided. Please note: The Basin is home to some of Maine's largest mosquitoes. They have been known to carry off pets and small children, so bring your bug spray, and plan to have the screens up by sunset.

Tides

	High	Height	Low	Height
August 8 th	6:56 AM	8.5'	12:42 AM	0.1'
	7:18 PM	9.9'	12:53 PM	0.7'
August 9 th	8:05 AM	8.4'	1:49 AM	0.1'
	8:23 PM	9.9'	1:59 PM	0.9'

Moorings/Anchorage

There are no moorings in the basin, but this is a totally protected anchorage. Once inside, look for a raft of boats with a big MYC Burgee. Anchor along west shore of bay where there's good holding in mud. Avoid the ledge north of Denny Reed Point in the center of the bay. Rafting at discretion of skippers. Note: Casco Bay, and especially The Basin, is a NO DISCHARGE AREA. The nearest pump-out station is at Sebasco on New Meadows River; and there's another at Great Island Marina on Quahog Bay.

If a man is to be obsessed by something, I suppose a boat is as good as anything, perhaps a bit better than most.

-E. B. White



Onshore Exploration The Basin Area

The 1,910 acre Basin Preserve, part of The Nature Conservancy, is the largest protected parcel in the Kennebec Estuary.

The Basin Preserve

The Basin Preserve's diverse topography ranges from hemlock gorges and pitch pine ridges to more than four miles of shoreline. Among the largest unfragmented forest blocks in the midcoast region, it includes valuable shorebird habitat and wintering areas for black ducks. The area was used by some of the earliest European settlers in Maine (nearby Popham Colony was settled in 1607) and has four historic graveyards within its borders. The Basin is also one of the oldest mineral specimen collecting localities in North America. In 1837, Maine's first state geologist, Charles T. Jackson described its "rare and beautiful crystals of cinnamon-stone garnet and idocrase." Clam diggers still bring in a substantial harvest from the upper Basin, and it is a popular site for hiking, biking, and hunting.



August 9, 2011
At Will

Officer of the Day: Mike Maginn

*Up anchor! Up anchor!
Set sail and away!
The ventures of dreamland
Are thine for a day.
-Silas Weir Mitchell*

Suggested Harbors

Many suggested harbors are described in further detail by MYC members in a document on the website. Go to the cruising page, and click on "Secrets of the Down East Coast." Some suggested spots for this at-will day include: Oven Mouth; Wiscasset; Boothbay Region Boatyard; Love Cove; Townsend Gut Passage; Boothbay and Damariscotta River; Boothbay Harbor; Linekin Bay; Damariscove



Entry to Robinhood Cove & Bath

"The Inside Passage from the Sheepscot River to Bath is one of the great adventures of the Maine coast. Like marriage, however, it is not to be entered into lightly, but advisedly...and soberly." *A Cruising Guide to the Maine Coast.*

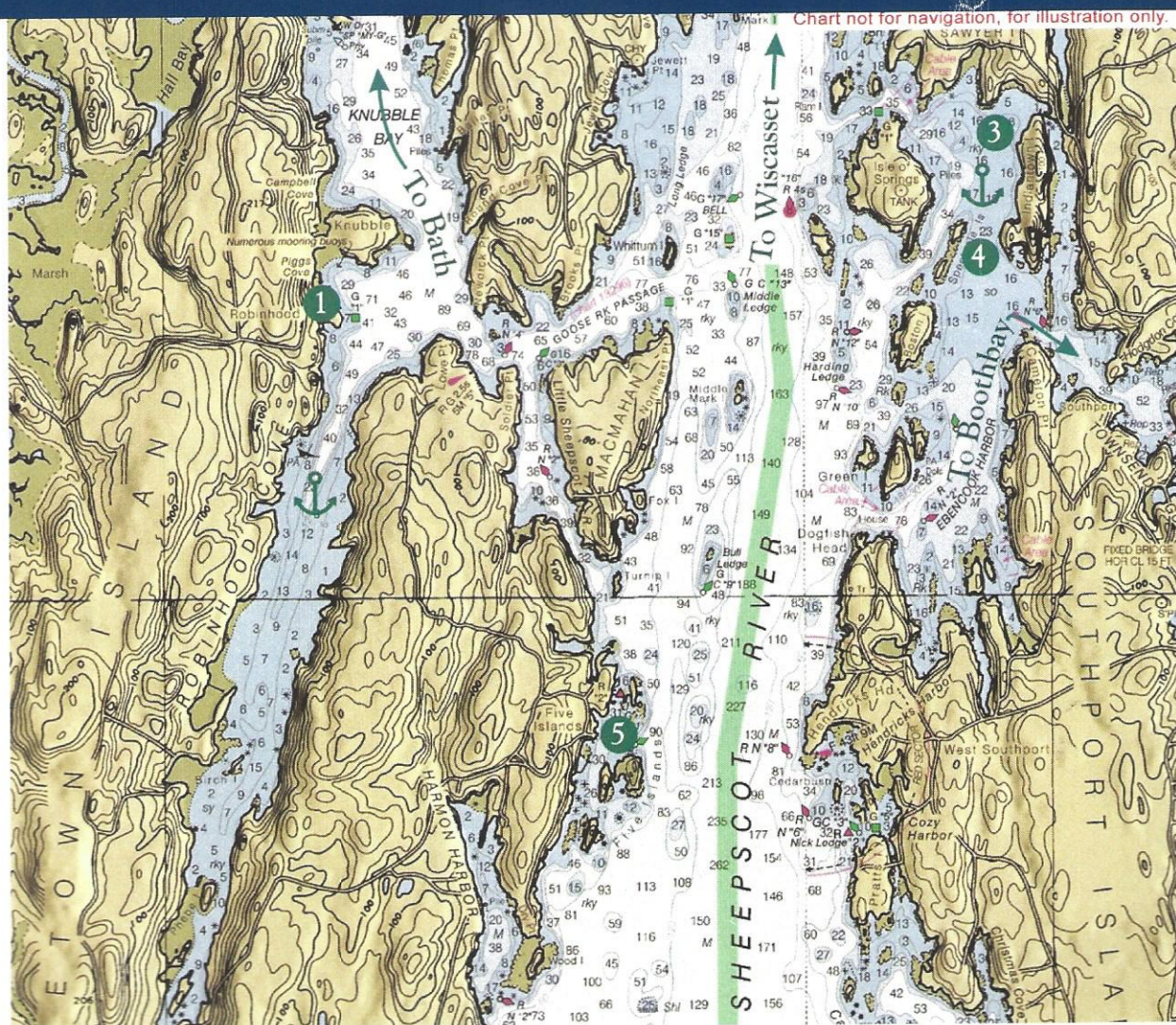
Skippers of the powerboat fleet making the trip to Bath should read, but not be alarmed by, the write-up in Taft: "The Inside Passage, Bath to Boothbay Harbor." Most of the concerns raised in Taft apply to sailboats, not power. Be advised that the day beacon R"22" shown on the Taft sketch chart of Upper Hell Gate is no longer there. Past Commodore Shuman always goes around, or southwest of the small island shown near the missing day beacon.

Currents on August 10:

Lower Hell Gate: High slack at 0955; max ebb 3.0 knots at 1337; low slack at 1644

Upper Hell Gate: High slack at 1201; Max ebb 0.8 knots at 1534; Low slack at 2038

At Bath we will drop passengers on the museum dock and pick up one of the seven mooring reserved for us. If possible we'll use one of the larger dinghies to ferry skippers ashore.



August 10, 2011

Robinhood Cove and Bath

Officers of the Day: Chet and Evelyn Shuman

Rendezvous

1030 on the dock at Robinhood Marine Center for departure to Bath

1800 for GWC at Robinhood Marine Center Library

Today we rendezvous at Robinhood Marine Center dock by 1030. The power boaters in the fleet will take groups up the Sasanoa River to Bath at 1100. Along the way we'll pass through both Upper and Lower Hell Gates before entering the Kennebec River across from the Bath Iron Works. In Bath we'll go ashore at the Maine Maritime Museum and split into two groups for trolley tours of the Bath Iron Works, shipbuilders since 1884. While the first group tours at 1230, the second group can tour the museum with a docent. At 1330 we'll have boxed lunches. The second group will depart for the tour at 1430. Between 1530-1600 we'll gather at the museum dock to travel back to Robinhood.

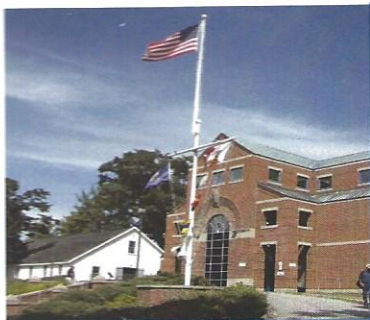
At 1800, we'll gather at Robinhood Marine Center front lawn for GWC. Please bring an hors d'oeuvre to share. Dinner possibilities ashore include the Osprey Restaurant at the marina, and The Robinhood Free Meetinghouse restaurant ¼ mile up the street.

Tides

	High	Height	Low	Height
August 10 th	9:24 AM	8.4'	3:09 AM	0.1'
	9:39 PM	9.9'	3:18 PM	0.8'
August 11 th	10:21 AM	8.6'	4:07 AM	-0.1'
	10:34 PM	9.9'	4:15 PM	0.7'

Moorings/Anchorage

Moorings are available through Robinhood Marine Center. 207.371.2343.



Onshore Exploration Bath Area

The sailor reaches his destination the moment the sails are raised.

-Anonymous

Robinhood Cove

"Robinhood" is the English name for Mohotoworomet, a mid-17th century Abenaki who was thought by many English to be a shaman. According to archeologist Bruce Bourque (*Twelve Thousand Years: American Indians in Maine*), settlers referred to him as they did other local men of influence by unusual names associated with fools of the English May fair such as Diogenes, Monquine, Jack Pudding, and Dick Swash.

Mohotoworomet was also a favored agent in negotiating land purchases. He sold Georgetown, Maine—some say—for a hogshead of rum and some pumpkins.

Walking Tour of Historic Forts

The Maine Maritime Museum provides this unique opportunity to participate in a guided exploration of six historic fortification sites at the mouth of the Kennebec River:

Colonial Fort St. Georges (1607-08)
War of 1812 Georgetown Battery (1808-15)
Civil War Fort Popham (1861-1918)
a Spanish War Battery (1899-1910)
WWI era Fort Baldwin (1905-1928)
WWII battery and observation tower (1942-46)

Advance registrations are required. Call (207) 443-1316.



August 11, 2011
At Will

Officer of the Day: Bill Barton

*On life's vast ocean diversely we sail,
Reason the card, but passion is the gale.*

-Alexander Pope, Essay on Man

*Townsend Out - 11th
Clg + 1hr*

Suggested Harbors

*Sequin
(moorings)*

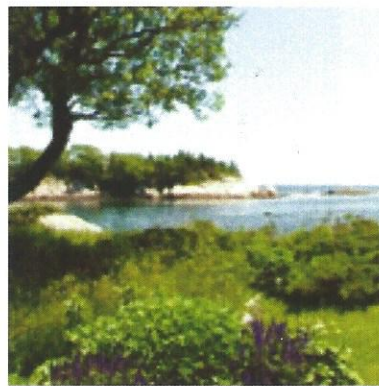
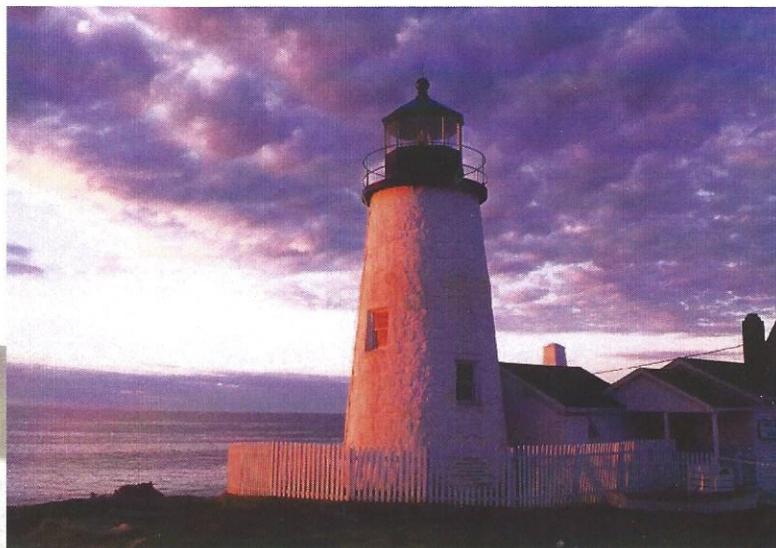
Many suggested harbors are described in further detail by MYC members in a document on the website. Go to the cruising page, and click on "Secrets of the Down East Coast." Some suggested spots for this at-will day include: Christmas Cove; East Boothbay; Seal Cove; Thread of Life; Pemaquid Harbor; Eastern Branch; Round Pond; Maple Juice Cove. *Ebenezer* *Dreumonth*

*Damariscove I
Monhegan (moorings)*

*John's
Bay
Hog I
(Rails)
Friendship*



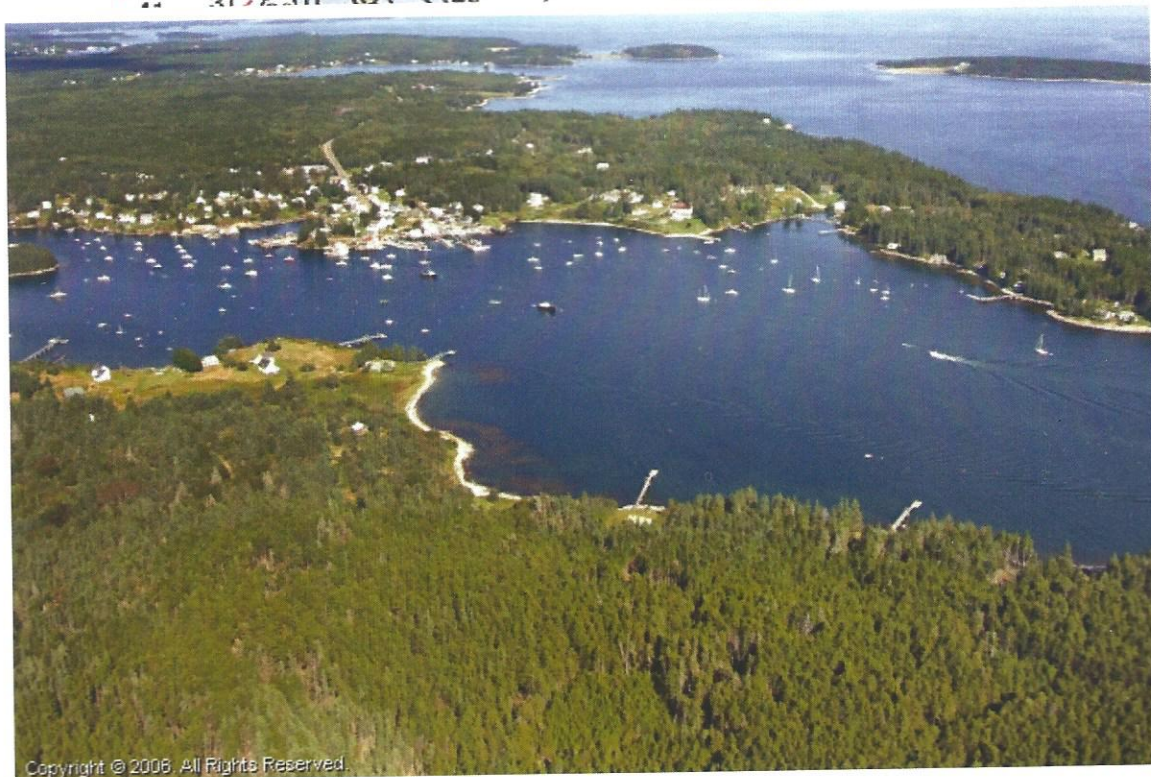
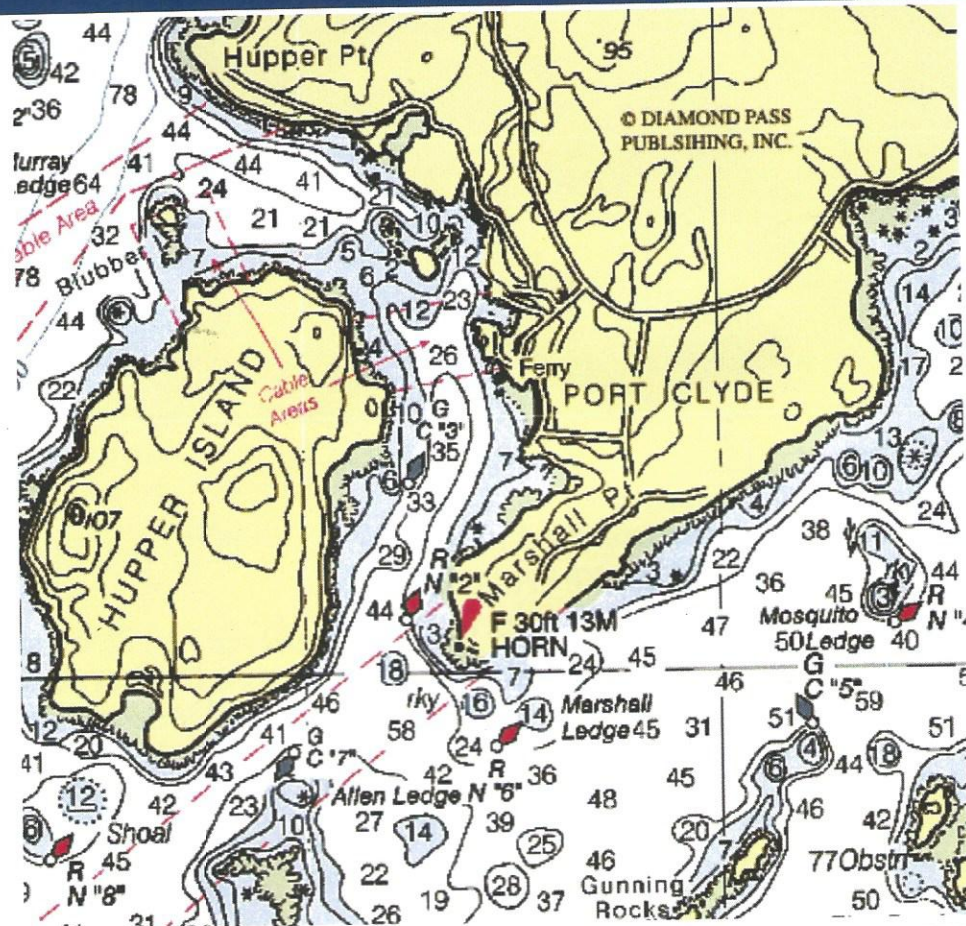
Allen, B



Eastern Egg Rock (puffins)

781-820-3267 Bill B

Entry to Port Clyde



Copyright © 2006. All Rights Reserved.

August 12, 2011

Port Clyde

Officers of the Day: Chris and Marlene Dolan

Rendezvous

1700

Bennett (8)
Chris (21)

We'll enjoy a cash bar and casual outdoor dining (bring a jacket!) at the Dip Net overlooking the harbor at the Port Clyde General Store.

Tides

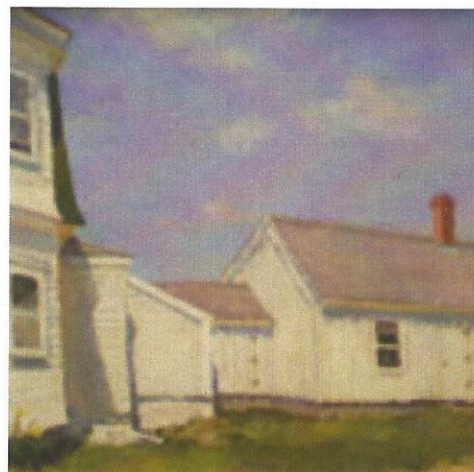
	High	Height	Low	Height
August 12 th	10:46 AM	8.9'	4:37 AM	-0.2'
	10:58 PM	10'	4:45 PM	0.5'
August 13 th	11:31 AM	9'	5:23 AM	-0.2'
	11:42 PM	10'	5:31 PM	0.4'

Moorings/Anchorage

20 moorings are reserved for MYC. Vessels pay upon arrival at the Port Clyde General Store.



Painting by Carol Manochio



Painting by Robert T. Schweizer



Onshore Exploration

Port Clyde

Marshall Point Lighthouse was the one to which Tom Hanks ran in the 1994 film *Forrest Gump*.

Marshall Point Lighthouse

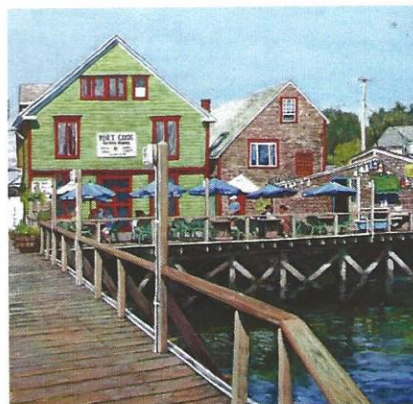
To help mariners entering Port Clyde's harbor or passing to the west into Muscongus Bay, Congress appropriated \$4000 for a light station at Marshall Point in March 1831. The rubblestone lighthouse tower, completed in 1832, was 20 feet high to the lantern deck. The first keeper was John Watts, a veteran of the War of 1812. The extant 31-foot brick and granite lighthouse was built in 1857. The cylindrical tower is 24 feet from its base to the lantern deck. The new lighthouse was fitted with a fifth-order Fresnel lens showing a fixed white light. A bell tower with a 1,000-pound bell was added to the station in 1898. The fog bell remained in use until it was replaced by a horn in 1969. The bell was returned to Marshall Point in the late 1980s and is now on display near the keeper's house.

The original 1832 keeper's house stood until 1895, when it was destroyed by a fire caused by lightning. The Colonial Revival house built that year still stands. In 1986, the St. George Historical Society undertook the restoration of the house. A committee raised money and the restoration was completed in 1990. The first floor now houses the Marshall Point Lighthouse Museum. The exhibits highlight area history as well as life at Marshall Point. Call (207) 372-6450 for information.

Port Clyde

Port Clyde is the southernmost settlement on the St. George peninsula in central coastal Maine and part of the town of St. George. In the 19th century, Port Clyde became a busy port featuring granite quarries, tide mills for sawing timber, and shipbuilding and fish canning businesses. Port Clyde's harbor was originally known as Herring Gut. By the 20th century, the area attracted artists and writers. Sarah Orne Jewett wrote *The Country of the Pointed Firs* in St. George.

Well known homeowners in Port Clyde include the Wyeth family, Chief Justice John Roberts, Steve Thomas of "This Old House," and Kenneth Noland, one of the best known American color field painters. Port Clyde is also the site of Fieldstone Castle, built by Russell W. Porter, and currently inhabited by artist Greg Mort as his summer studio.



Painting by Thomas Michael Meddaugh

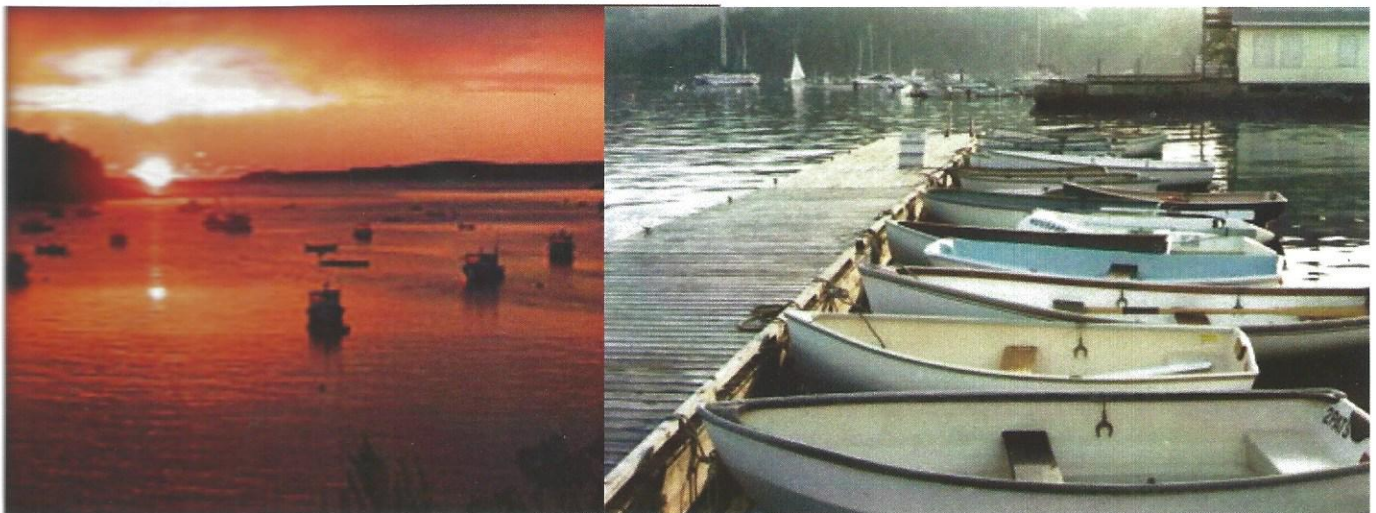
August 13-15, 2011
At Will

Officers of the Day
August 13th: Tom Johnson
August 14th: Peter Madsen
August 15th: Mory Creighton

Suggested Harbors

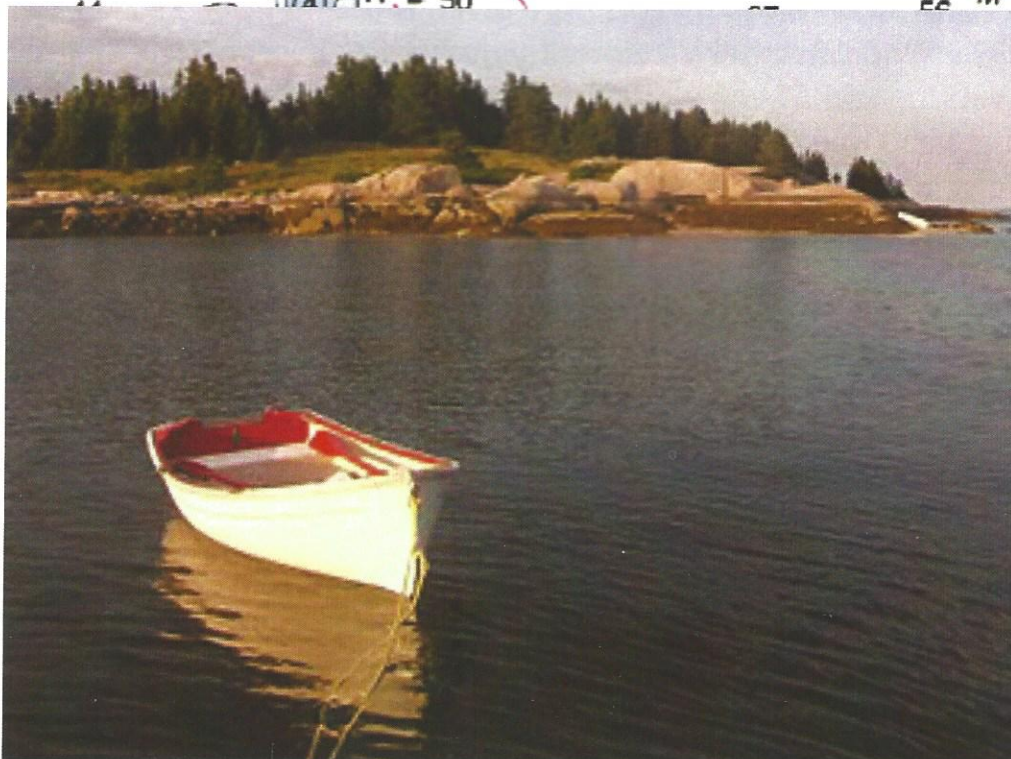
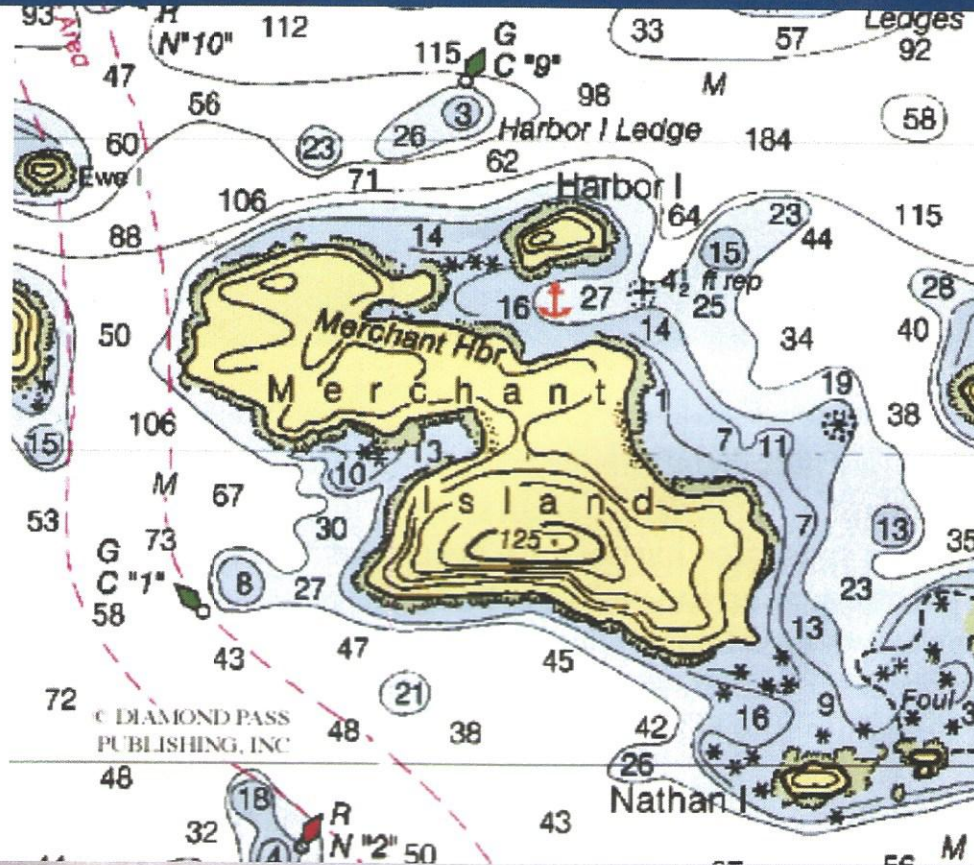
West Penobscot Bay is some of the most beautiful cruising on the Eastern seaboard. There are innumerable harbors, from bustling Camden to the Basin on Vinalhaven. Many suggested harbors are described in further detail by MYC members in a document on the website. Go to the cruising page, and click on "Secrets of the Down East Coast." Some favorites include: High & Dix Islands; Rockland; Rockport; Bucks Harbor; White Islands; Pulpit Harbor; Crockett Cove, Vinalhaven; Benjamin River; Brooklyn & Wooden Boat.

And, don't forget Perry Creek! This lovely spot is a long time favorite of the MYC cruising fleet and an MYC mooring is here given in memory of past Commodore Sam Batchelder who came here frequently on his yawl Serene. There are some wonderful walking trails here maintained by the Vinalhaven Land Trust. From the MYC mooring, head due west and around the back of this little point you can tie up your dinghy and start walking west.



Entry to Merchant Island

Anchor in the 16' area close to the beach. Note the rock in the 27' area.



August 16, 2011

Merchant Island

Officers of the Day: Randy and Augusta Ayer

Rendezvous 1200

We'll gather on South Beach for a picnic, then explore the island, learn about island lore, and meet some of the neighbors. Bring a blanket, and don't forget the bug spray!

Tides

	High	Height	Low	Height
August 16 th	12:52 AM	9.8'	6:41 AM	0.1'
	1:15 PM	9.5'	6:59 PM	0.5'
August 17 th	1:31 AM	9.6'	7:17 AM	0.4'
	1:51 PM	9.4'	7:38 PM	0.6'

Moorings/Anchorage

Anchor in the 16' spot on the north side. Note the rock to the east of the 27' spot!
Land your dinghy on the beach for the picnic.





Onshore Explorations Merchant Row

Merchant Row is an archipelago of 40+ islands that range in size from less than an acre to the 250-acre Merchant Island.

Merchant Island

Anthony Merchant was a master mariner from York, Maine. He settled on what is now called Merchant Island around 1770. He was the first settler on any island among those lying between Deer Isle and Isle au Haut. In 1804, he successfully petitioned the Commonwealth of Massachusetts for title to two hundred acres on Merchant, as well as Burnt Island. In 1820, he had to reacquire legal title to his land when Massachusetts and Maine separated.

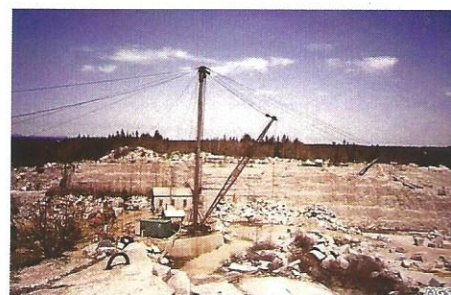
For generations thereafter, descendants of Merchant populated the island and others in the archipelago. By 1833, the population of the islands had swelled so that a special school district was created for Merchant Island which included, at least for several years, Wreck and Round Islands as well. The school on Merchant Island carried on until 1901 when it closed for lack of pupils.

The successful farming and fishing livelihood enjoyed by the Merchants eventually extended to off-island speculators and investors who by the 1880s increasingly populated the island. In addition to raising cattle and horses, a variety of Merchant Island gardens and hothouses provided vegetables and flowers for markets in Bar Harbor.

Merchant Row

Merchant's Row is the archipelago of some 40+ major islands in the thoroughfare between Stonington and Isle au Haut. It provides perhaps the most variety and exploration opportunities, not to mention sheer beauty, of any water on the coast. Every island beckons, with their white and pink granite sloping down to the water from densely wooded interiors and tiny beaches dotting the shores. Even the names add to the exploration temptation: Grog, Round, Sprout, Potato, Enchanted. And in some cases, a little less: Hell's Half Acre, Devil, Wreck.

You'll see old quarries on some of the islands, and the remains of stone piers that once bustled when the granite trade was booming. Crotch Island is still the site of a rejuvenated quarrying operation. A word of caution, though: Many of the islands are privately owned and visitors aren't invited. But Wreck, Round, McGlathery and Russ belong to environmental groups, and many others are part of the Maine Island Trail Association.



August 17, 2011
At Will

Officers of the Day: Jim Starkey and Anne Harrison

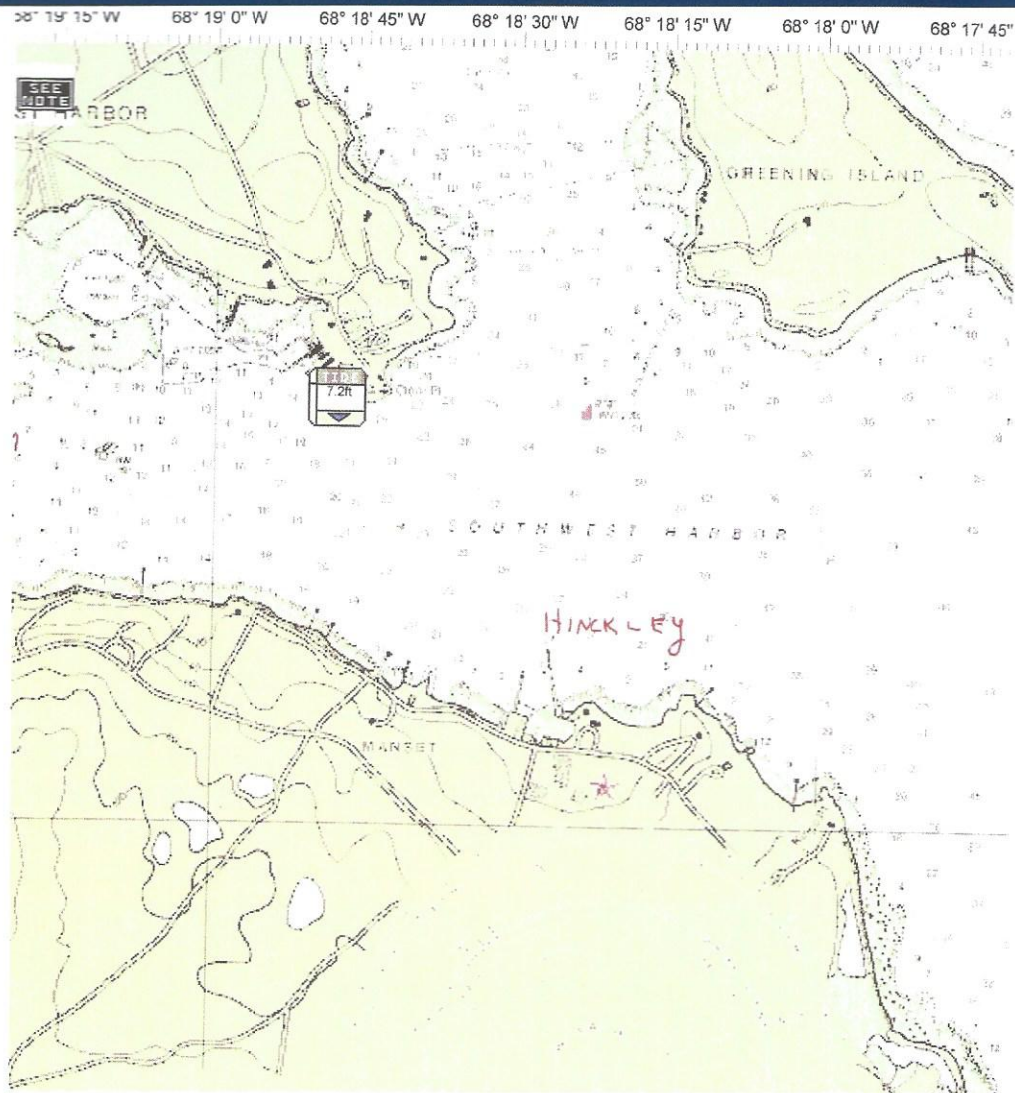
I find the great thing in this world is not so much where we stand, as in what direction we are moving: To reach the port of heaven, we must sail sometimes with the wind and sometimes against it - but we must sail, and not drift, nor lie at anchor.
-- Oliver Wendell Holmes

Suggested Harbors

Many suggested harbors are described in further detail by MYC members in a document on the website. Go to the cruising page, and click on "Secrets of the Down East Coast." Some suggested spots for this at-will day include: Isle Au Haut; Duck Harbor; Stonington; Crotch Island; Wreck Island; Round Island; McGlathery Island; Camp, Devil, Bold Islands; Hell's ½ Acre.



Entry to Southwest Harbor



August 18, 2011
Southwest Harbor

Officers of the Day: Abbott and Katharine Reeve

Rendezvous 1730

We'll gather at Hinckley's for a seaside dinner of lobster, steak or haddock with all the extras. Please bring your own bottle if you'd like something other than iced tea, hot tea, or coffee.

Tides

	High	Height	Low	Height
August 18 th	2:11 AM	10.2'	7:54 AM	0.8'
	2:30 PM	10.3'	8:18 PM	0.9'
August 19 th	2:51 AM	9.7'	8:32 AM	1.1'
	3:09 PM	10.1'	9:01 PM	1.1'

Moorings/Anchorage

Moor at Hinckley Yacht Service (\$35) and receive extended launch service until 10 PM and a free bag of ice.

If you want to build a ship, don't drum up the men to gather wood, divide the work and give orders. Instead, teach them to yearn for the vast and endless sea.
-Antoine de Saint Exupery



Onshore Explorations Southwest Harbor

Storm of the Century (1999) was filmed in Southwest Harbor.

How Hinkley Began

Hinckley was founded in 1928 by Benjamin B. Hinckley after he purchased a small boatyard in Southwest Harbor. In 1932 Benjamin's son, Henry R. Hinckley, an engineering graduate from Cornell, took control of the company. A 36 foot "fisherman motorboat" dubbed "Ruthyeolyn" built in 1933 was Hinckley's first boat. Five years later, in 1938, Hinckley came out with its first sailing vessel, a 28 foot Sparkman and Stevens sloop. Hinckley would go on to produce 20 of these sloops, making them the company's first mass production line. Straying away from boatbuilding, Hinckley opened Manset Marine Supply Company in 1940 for which he designed many fittings for fuel tanks, stanchions, deck plates, and the like that are still utilized today.

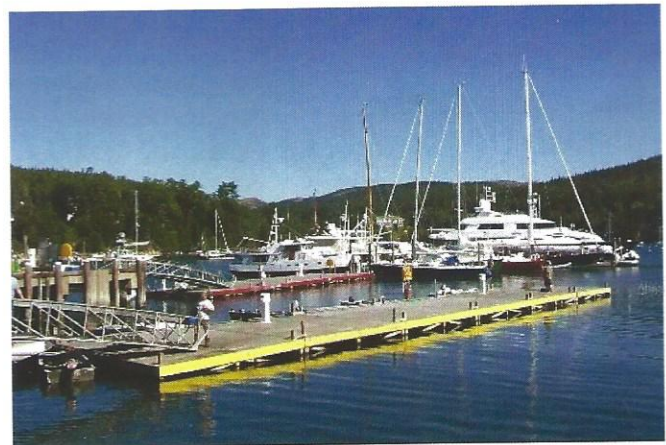
The Island Explorer

The Free Island Explorer shuttle bus service makes regular stops in Southwest Harbor. Refer to their #7 Southwest Harbor Route.

Southwest Harbor

Southwest Harbor has an interesting history. It was the first place on Mount Desert Island to have hotels and wharves

to accommodate steamboats in the earlier nineteenth century. The island's first settlement was in what is now called Somesville in the year 1761. The whole island, including the Cranberry Isles, Beech Island, Robertson's Island, and Bartlett's Island, was formed into Mount Desert in 1789. The section now known as Southwest Harbor was incorporated on February 21, 1905.



The Wendell Gilley Museum

Wendell Gilley is a name well known among carvers and carving collectors. Author of *The Art of Bird Carving: A Guide to a Fascinating Hobby*, one of the earliest instructional books on the subject, Gilley was a pioneer in the field of decorative bird carving. By his estimate, he created "ten thousand birds of pine and paint" between 1931 and 1983. Visit the museum at 4 Herrick Road, Southwest Harbor. 207.244.7555.

INTERNATIONAL CODE

CODE FLAG AND



ANSWERING PENDANT

A ALPHA 	I have a diver down; keep well clear at slow speed.	N NOVEMBER 	No (negative or 'The significance of the previous group should be read in the negative').
B BRAVO 	I am taking in or discharging or carrying dangerous goods.	O OSCAR 	Man overboard.
C CHARLIE 	Yes (affirmative or 'The significance of the previous group should be read in the affirmative').	P PAPA 	In Harbour (Blue Peter); All persons should report on-board as the vessel is about to proceed to sea.
D DAKOTA 	Keep clear of me - I am manoeuvring with difficulty.	Q QUEBEC 	My vessel is healthy and I request free pratique.
E ECHO 	I am altering my course to starboard.	R ROMEO 	No signal.
F FOXTROT 	I am disabled. Communicate with me.	S SIERRA 	My engines are going astern.
G GOLF 	I require a Pilot.	T TANGO 	Keep clear of me, I am engaged in pair trawling.
H HOTEL 	I have a Pilot on board.	U UNIFORM 	You are running into danger.
I INDIA 	I am altering my course to port.	V VICTOR 	I require assistance.
J JULIETT 	I am on fire and have dangerous cargo on board, keep well clear of me.	W WHISKEY 	I require medical assistance.
K KILO 	I wish to communicate with you.	X X-RAY 	Stop carrying out your intentions and watch for my signals.
L LIMA 	You should stop your vessel instantly.	Y YANKEE 	I am dragging my anchor.
M MIKE 	My vessel is stopped & making no way through the water.	Z ZULU 	I require a tug.

NUMERAL PENDANTS

1 	2 	3 	4 	5
6 	7 	8 	9 	0

SUBSTITUTES

FIRST SUBSTITUTE 	SECOND SUBSTITUTE 	THIRD SUBSTITUTE
-------------------------	--------------------------	-------------------------

Sat Aug 6 - Left NYC 0945, to Amrisgum 1115, port RR bridge
1125, into Ipswich Bay (flat) -

Yacht Name	AGADOU
------------	--------

# Crew	Crew Names
3	Roy & Martha Mayne, Beau Geste Mayne (Collie)

Event Summary

Kittery	The Basin GWC	Robinhood / Bath Museum	Robinhood / Bath Iron Works	Robinhood GWC	Port Clyde	Merchant Island	Southwest Harbor
2	2	2		2	2	2	2

Meal Summary

Kittery Point	Bath Maritime Museum Lunch			Port Clyde General Store			Merchant Harbor	Southwest Harbor
Hot & Cold Hors d'Oeuvres	Turkey Club	Roast Beef	Chicken Caesar Wrap	Lobster Roll	Roast Beef Roll	Turkey Roll	Chowder Luncheon	Maine Lobster Dinner
2	1	1		2			2	2

1 mast fore-and-aft

CATBOAT



1 mast fore-and-aft, plus headsail(s)

SLOOP

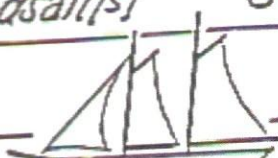


CUTTER

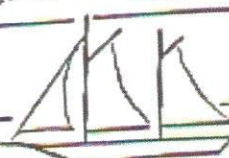


2 masts fore-and-aft (BOTH)

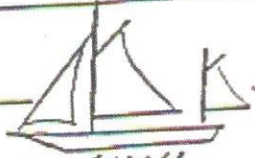
SCHOONER



KETCH



YAWL



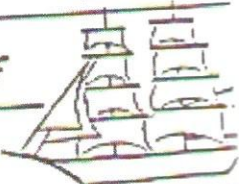
2 masts square fore-topsail(s);
both masts fore-and-aft

TOPSAIL SCHOONER
(BRIGANTINE)



2 masts 1 square (foreward);
1 fore-and-aft (aft)

HALF-BRIG or
HERMAPHRODITE

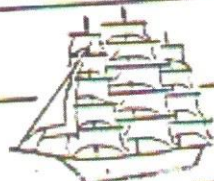


2 masts square (BOTH)

BRIG or FULLBRIG

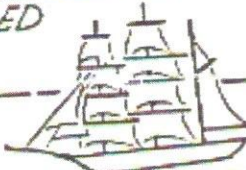
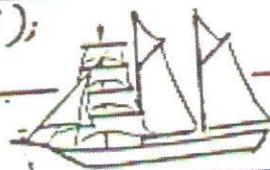
3+ masts square (ALL)

FULL-RIGGED
SHIP



3+ masts 1 fore-and-aft (aftmost);
the rest square

BARKENTINE or
BARQUENTINE

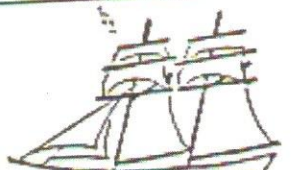


BARK
BARK

3+ masts 1 square (foremost);
the rest fore-and-aft



4-MASTED SCHOONER



MAIN-TOPSAIL
SCHOONER



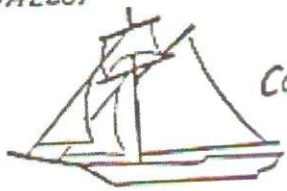
SHALLOP



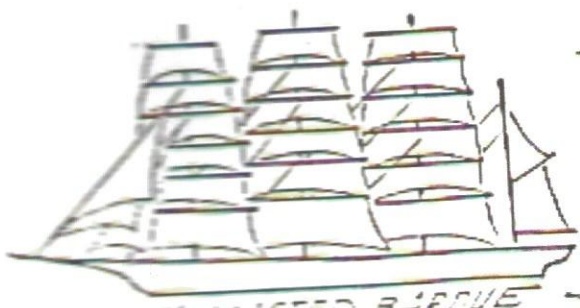
PINNACE



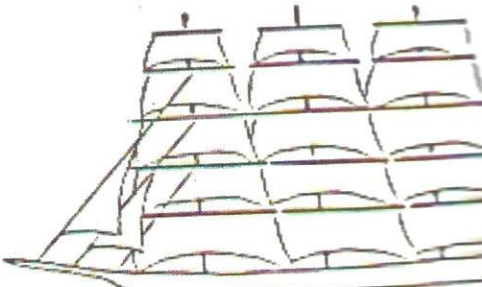
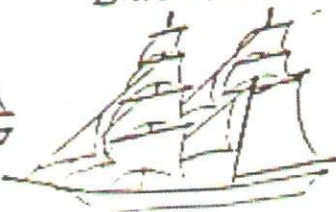
BRIGANTINE'S



COLONIAL
SLOOP



4-MASTED BARQUE



4-MASTED SHIP



Twenty years from now you will be more disappointed by the things that you didn't do than by the ones you did do. So throw off the bowlines. Sail away from the safe harbor. Catch the trade winds in your sails.

Explore. Dream. Discover.

- Mark Twain